

Procedures for the delivery of your equipment.



SIGN - PRINT - PACKAGING



Procedures for the delivery of your equipment:

The Sheraton Laval Convention Center offers limited access for the delivery of your booth equipment.

Therefore, you must respect the time slot that is assigned according to the location of your booth to ensure the smoothest possible traffic flow.

To do so, you must clear the unloading dock as soon as your equipment is returned to your booth. We ask that you pick up your pallets later in order to free the delivery dock as soon as possible.

For all booths regardless of the zone, if the set-up of your booth requires less than 4 hours with light pop-up style kiosk or equipment provided by DEE, you can proceed with the set-up of your booth on Thursday morning starting **at 5:00 AM**. In addition, for small packages you can enter through the main door of the Congress.

Floor plan & zones.



PÉRIODES DE LIVRAISON DES ÉQUIPEMENTS SELON VOTRE ZONE



#2 YUL TECHNOLOGIES	#11 RUBENSTEIN RB DIGITAL INC.	#21 MULTICAM QUÉBEC	#33 TACTIC-TQO INC.	#44 ENSEIGNES SYSTÈME E	#57 DAKTRONICS
#3 LUSSIER DALE PARIZEAU	#13 GL-SHART SOLUTIONS	#22 TAS FILMS	#34 EGZATEK	#45 TROTEC LASER CANADA	#58 CRÉATEURS D'IMPACT
#4 CSHOCQ	#14 SLOANLED	#23 LIBERTÉ VISION	#35 INSTALLATIONS STALACH	#47 ENCREX EXPERTS	#59 I-CJ/COLLÈGE AHUNTIC
#5 CSHOCQ	#15 EH PLASTIC	#24 CAUD-CA	#36 MULTI-SYSTÈME	#48 TROTEC LASER CANADA	#60 AQIFE
#6 FLAGSHIP	#16 FABRIK & CO.	#28 AXYZS CONSULTANTS	#37 ENSEIGNES FECTEAU	#50 AMP DIGITAL	#61 CRÉATEURS D'IMPACT
#7 INFINITE TOOLS	#17 MEDIATECH	#29 OPENMIND TECHNOLOGIES	#38 MULTI-FLEX	#51 FELIX GLUIER	#62 AQIE
#8 TG GRAPHICS	#18 MEDIATECH	#30 COMMUNICATION TREMBLAY-MÉNARD	#39 SUPRA SIGNALISATION COSSON	#53 CANFLEXOIS	#63 SAC-ACE
#9 ND GRAPHICS	#19 MEDIATECH	#31 SIGN COMP	#40 IMACOM MEDIA-AFFICHAGE	#54 MUSÉE DE L'IMPRIMERIE DU QUÉBEC	#64 ASSOCIATION CND DE L'IMPRIMERIE
#10 SPICERS	#20 MULTICAM QUÉBEC	#32 GRENIKE	#41 ALLANSON INTERNATIONAL	#56 FUJIFILM	#65 ALTEC INDUSTRIES



1 landing dock

Side, facing highway 440



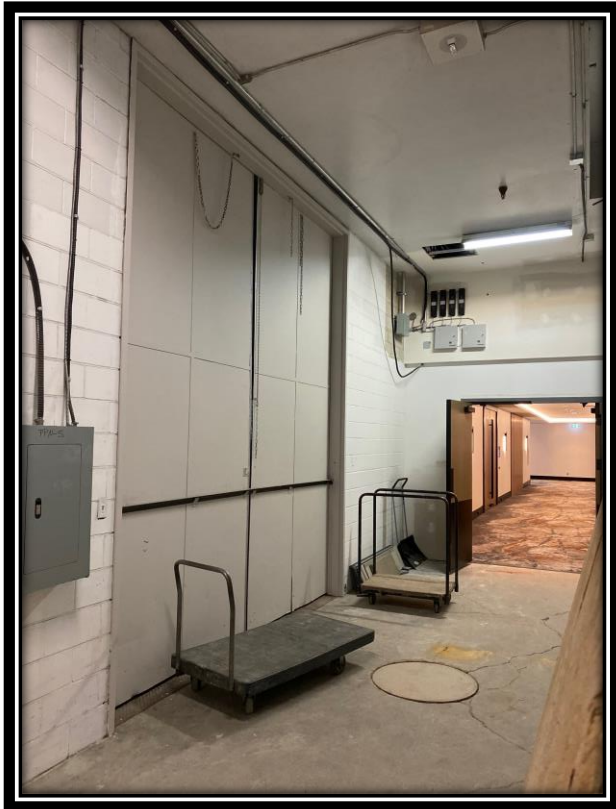
1 garage door on the ground

Side (highway 440)

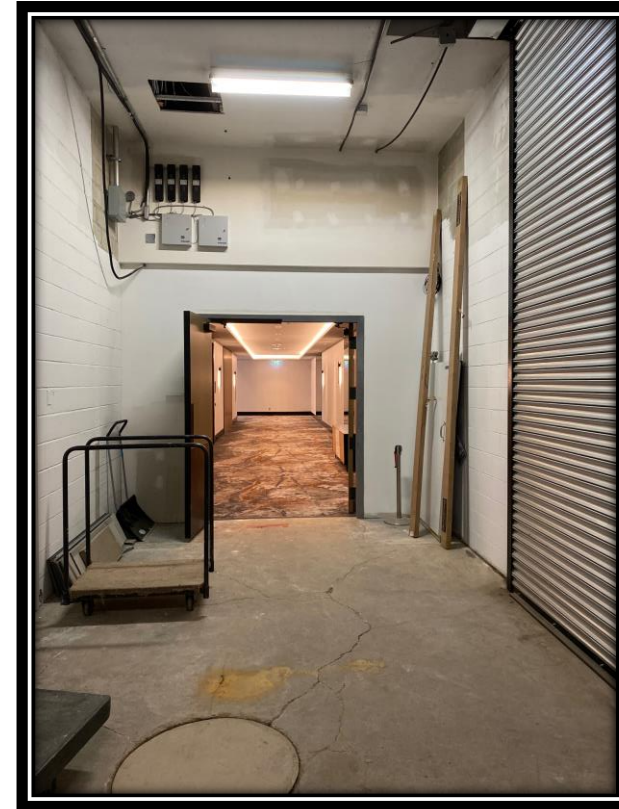


2 access doors to the showroom

Main door 167" h. x 142" direct access to yellow,red,green,blue zones



Secondary door 92" h. x 64" gives direct access to the orange area.



Main entrance door for our event.

If you have small packages you can use the main door with the show colors to get to your booth area.



Important notes:

You may proceed with the set up of your booth on the night of April 20-21 and you must be 100% ready for the opening of the Show on Thursday, April 21 at 10:30am.

1. You must have your pallet jack if required.
2. You must protect the existing floor / carpet with a carpet cover available at DEE if you have equipment such as cutting table, printer etc.
3. Your truck must clear the loading dock **as soon as your equipment is returned to your booth.**
4. Please note that there is another show on April 20th in the red, yellow, green and blue zones. Therefore, it is impossible for these areas to have access before the time slots indicated.

❑ Need help? Do you have any questions?

1. You need information about your area for the delivery of your equipment?

Contact Charles or Huguette at 514 497-8362 or info@aqie.ca

2. Consult the FAQ document for all other questions; <https://legrandrendezvous.ca/guideexpostant/>

Besoin d'aide pour votre kiosque ?

FOURNISSEURS KIOSQUES ACCRÉDITÉS PAR LE SALON

Le Salon a conclu une entente avec deux fournisseurs pour vous accompagner pour la réalisation de votre kiosque.

Dee Décor Expert pour un kiosque rigide sur mesure ou toutes autres accessoires tels que chaises, tapis, tables, etc. Votre contact est Dianne Lachance 450-646-2251 ou lachance@dee-expo.com. Voir PDF [ici](#) pour choix de kiosques.

KIOSQUES DEE ET ACCESSOIRES POUR EXPOSER

Fabrik&Co (membre AQIE) est un spécialiste pour la fourniture d'accessoires d'affichage pour exposition et impression sur tissus, tels que : « Backdrop », drapeau, nappe personnalisée, et structure suspendue, etc. Votre contact est Ian Ritchot 514-316-6656 ou ian@fabrik-co.com

Catalogue Fabrik&Co

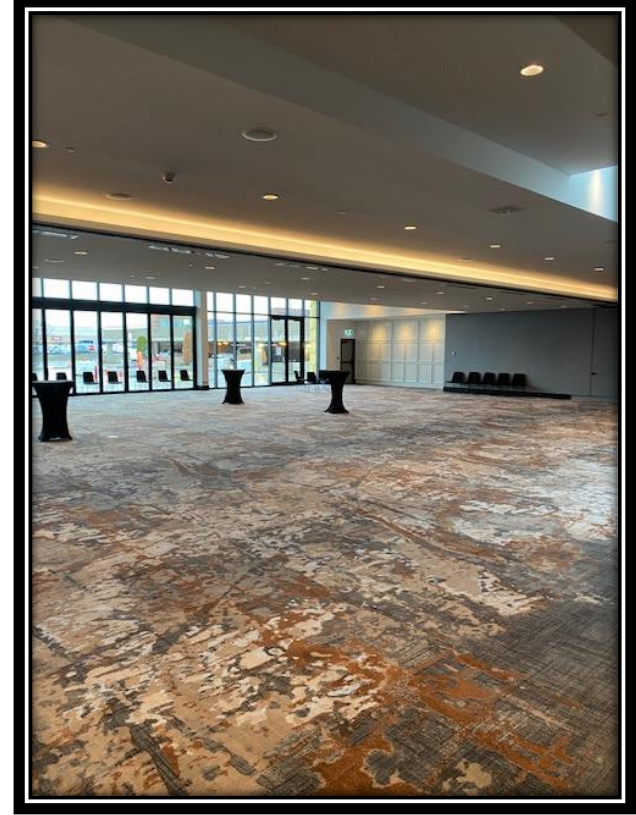
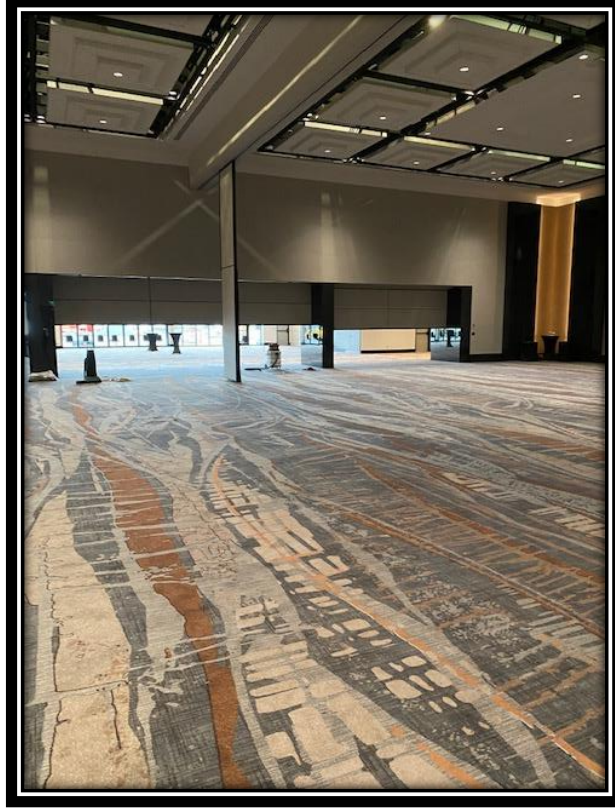
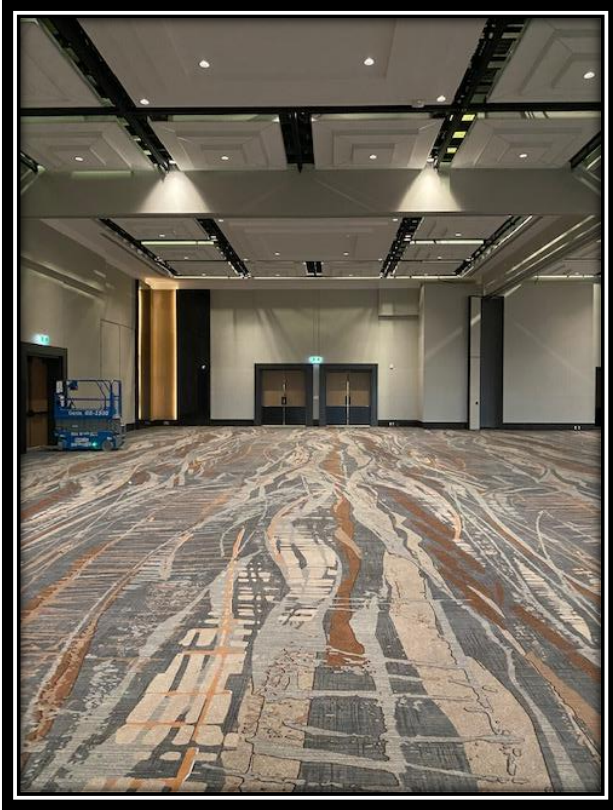
Besoin d'assistance?

Communiquez avec nous par courriel direction@aqie.ca ou 514-876-4176

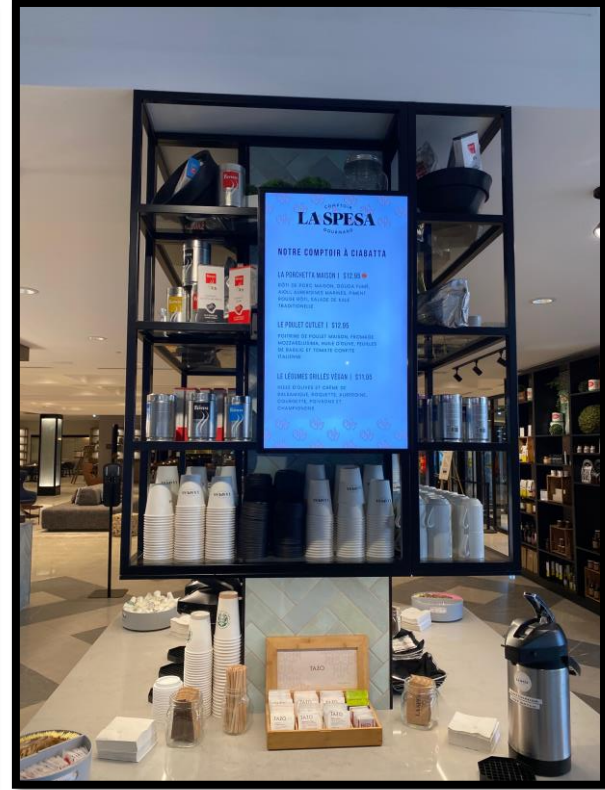
FOIRE AUX QUESTIONS



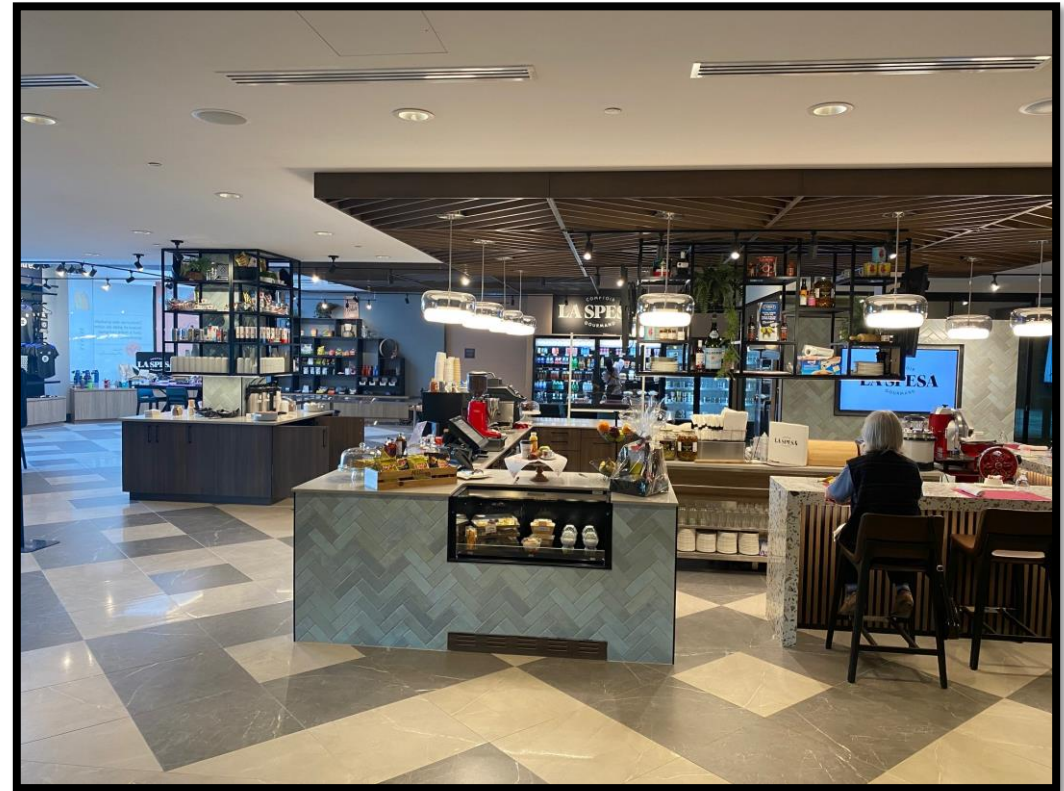
Exhibition room



Gourmet Corner for you and your employees



Gourmet Corner for you and your employees





ENSEIGNE - IMPRIMERIE - EMBALLAGE

BIENVENUE WELCOME

2

3

4

5

6

7

8

9

10

Salle 1-2-3
Laval

11

61

13

58

20

21

14

15

16

22

23

17

18

19

24

28

29

30

31

32

33

ENTRÉE

36

37

44

47

45

48

34

35

38

39

50

53

51

54

40

41

56

59

57

60

65

62

63

64

Espace lounge
& cocktail

GRANDE FENÊTRE AVEC VUE SUR L'EXTÉRIEUR

#2	VUL TECHNOLOGIES
#3	LUSSEY DALE PARISIAU
#4	CSMOGO
#5	CSMOGO
#6	FLAGSHIP
#7	INFINITE TOOLS
#8	YO GRAPHICS
#9	HD GRAPHICS
#10	SPICERS

#11	RUBENSTEIN RB DIGITAL INC.
#13	GL-SHART SOLUTIONS
#14	SLOANLED
#15	EM PLASTIC
#16	FABRIK & CO.
#17	MEDIA TECH
#18	MEDIA TECH
#19	MEDIA TECH
#20	MULTICAM QUÉBEC

#21	MULTICAM QUÉBEC
#22	TAS FILMS
#23	LIBERTÉ VISION
#24	CAUGICA
#28	AXYZ CONSULTANTS
#29	OPENMIND TECHNOLOGIES
#30	COMMUNICATION TREMBLAY-MÉNARD
#31	SIGN COMP
#32	GREINKE

#33	TACTIC-TGO INC.
#34	EGZATEK
#35	INSTALLATIONS STALACK
#36	MULTI-SYSTÈME
#37	ENSEIGNES RECTEAU
#38	MULTI-FLEX
#39	SUPRA SIGNALISATION COSSON
#40	IMACOM MEDIA AFFICHAGE
#41	ALLANSON INTERNATIONAL

#44	ENSEIGNES SYSTÈME E
#45	TROTTEC LASER CANADA
#47	ENCREX EXPERTS
#48	TROTTEC LASER CANADA
#50	AHP DIGITAL
#51	FELIX GLIVER
#53	CANFLEXORS
#54	MUSÉE DE L'IMPRIMERIE DU QUÉBEC
#56	FUJIFILM

#57	DAKTRONICS
#58	CRÉATEURS D'IMPACT
#59	ILCO/COLLÈGE ATLANTIC
#60	AQIRE
#61	CRÉATEURS D'IMPACT
#62	AQIRE
#63	SAC-ACE
#64	ASSOCIATION CND DE L'IMPRIMERIE
#65	ALTEC INDUSTRIES

Conception et impression
CAUD.CA #24

LEGRANDRENDEZVOUS.CA